



THE CORPORATION OF THE CITY OF NIAGARA FALLS

ADDENDUM #1

RFT12-2021

City of Niagara Falls Municipal Service Centre Renovation

CLOSING DATE: Wednesday, April 14th, 2021 at 1:45 p.m. local time

This addendum shall form an integral part of the Request for Tender (RFT) documents for the above noted RFT and shall be read in conjunction therewith. This addendum shall, however, take precedence over all requirements as it pertains to the particular and specific items noted below.

This addendum must be signed by the Bidder in the appropriate space and must be attached to the Bidder's Tender submission at the stated time of the closing of the RFT or prior to this time. Tender submissions not including this addendum will be rejected.

Clarifications

Revision to Instructions to Bidders, Evaluation and Award - Payment Schedule 15. e):

- net thirty (30) days, revised to net twenty-eight (28) days

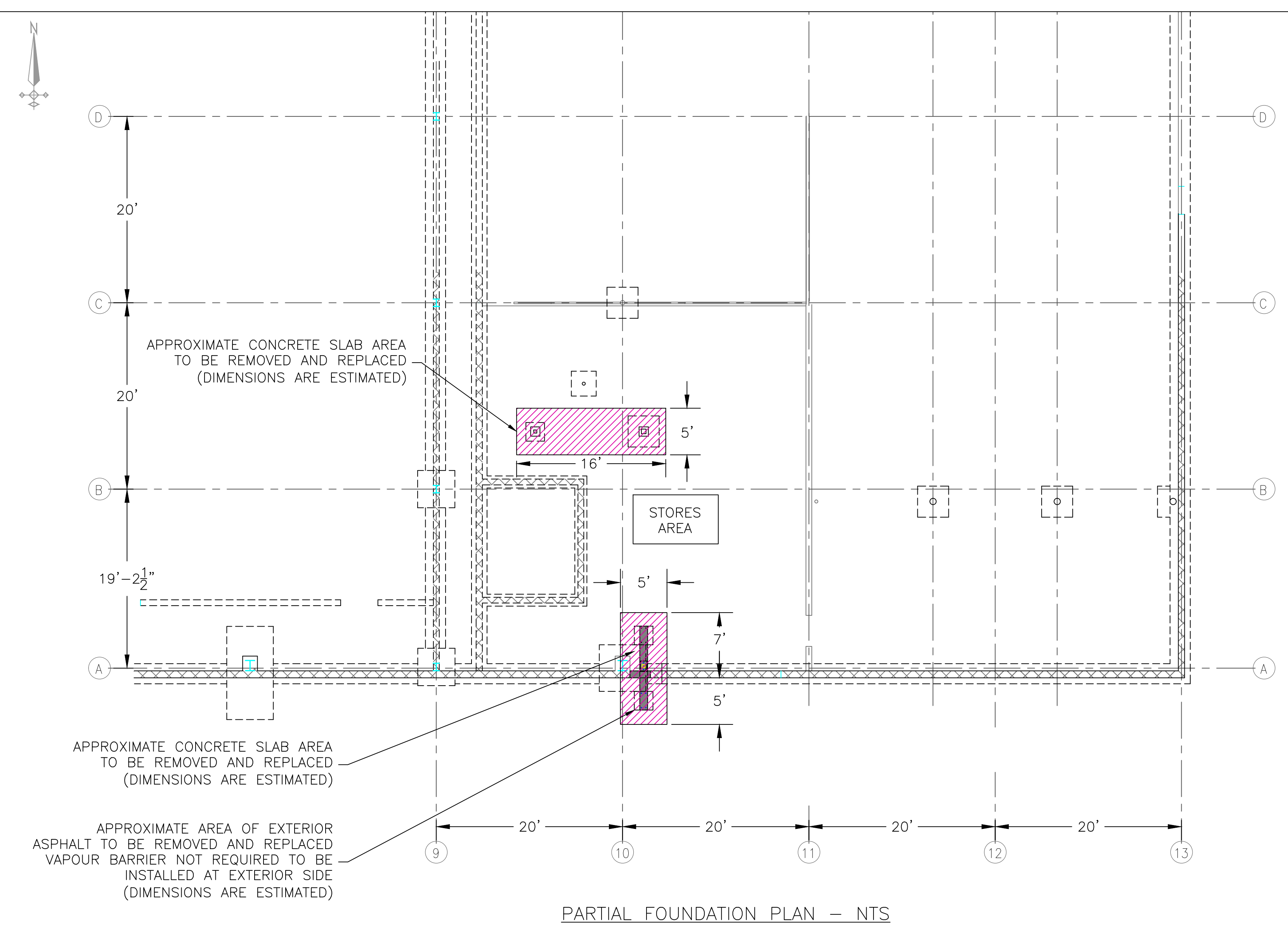
Refer to additional documents attached as part of this Addendum #1:

- Environmental Notes dated January 6, 2021 – Ontario Environmental & Safety Network Ltd. – 1 page
- Asbestos Condition Assessment 2019 dated June 2019 – Ontario Environmental & Safety Network Ltd. - 12 pages
- Asbestos Location Drawings 2021 dated March 25, 2021 – Ontario Environmental & Safety Network Ltd. – 3 pages

The Bidder shall take due notice of the above noted changes and make allowance for same in the Bidder to be submitted to the City of Niagara Falls.

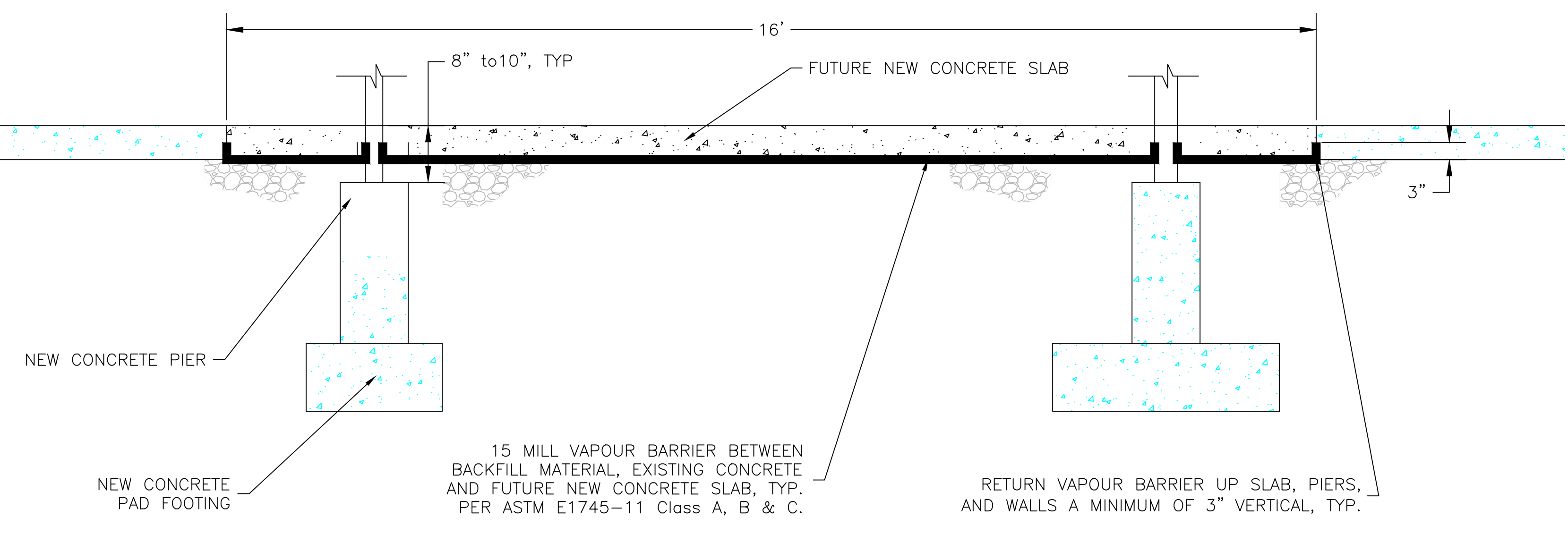
COMPANY NAME:	
BIDDER'S SIGNATURE:	
BIDDER'S NAME: (Please Print)	
DATE:	

- Q1. The existing conventional fire alarm is being removed. We are replacing this with a new addressable system. The specs state Simplex only. Can we use an alternate equal that can meet all the specifications? This will also keep the price very competitive as a single source tends to have their pricing a lot higher without any competition.
- A1. **Acceptable equals to the specified Fire Alarm System are addressable Edwards and Notifier. No other alternates will be accepted.**
- Q2. Can you advise if RES scope (Allowance) includes all mechanical, HVAC and plumbing services?
- A2. **Yes, RES scope (Allowance) includes all mechanical, HVAC and plumbing services.**
- Q3. With the tender closing during the rescheduled March Break "April Break" can this project be extended to the following week?
- A3. **As noted at the mandatory site meetings, an extension to the closing date and time will not occur.**



PARTIAL FOUNDATION PLAN - NTS

FOUNDATION PLAN DRAWING PROVIDED BY ACA ENGINEERING SERVICES LIMITED



15 MILL VAPOUR BARRIER BETWEEN BACKFILL MATERIAL, EXISTING CONCRETE AND FUTURE NEW CONCRETE SLAB, TYP. PER ASTM E1745-11 Class A, B & C.

RETURN VAPOUR BARRIER UP SLAB, PIERS, AND WALLS A MINIMUM OF 3" VERTICAL, TYP.

NOTE:

- SEE ACA ENGINEERING SERVICES LIMITED DRAWING # S1 "FOUNDATION PLAN / SECTIONS NOTES FOR EXACT LOCATION AND DIMENSIONS OF NEW FOOTINGS AND PIERS. THIS DRAWING IS TO SHOW THE APPROXIMATE LOCATION OF CONCRETE / ASPHALT DEMOLITION AND THE RECOMMENDED VAPOUR BARRIER ARRANGEMENT

VAPOUR BARRIER LOCATION DETAIL - TYP NTS

ENVIRONMENTAL NOTES

- This Section is intended to assist Respondents in gaining an understanding of the City of Niagara Falls requirements for potential environmental concerns.
- The Niagara Falls Service Centre Building has had impacts of petroleum hydrocarbons, volatile organic compounds (VOCs), polyaromatic hydrocarbons, (PAHs), etc. throughout the history of activities/operations onsite. Impacts have been identified for sub slab conditions within the Stores area of the building.
- This drawing and specification is provided to allow for contractors bidding to account for conditions that may be encountered during the removal of concrete, asphalt, excavation for footings/foundation and provide for appropriate personal protective equipment (PPE) for workers/persons.
- The City will provide air quality monitoring and waste characteristic sampling of excavated materials. Air quality monitoring will be conducted on-site, with real-time measurements. Waste characteristic sampling requires laboratory analysis and 5-day turnaround time for analysis results.
- The City is providing an 'allowance' for environmental/occupational protection of workers up to \$20,000, exclusive of HST.
- The Successful Respondent will require protection for worker and environment during the cutting/removal of concrete and sub slab materials.
- Cutting/breaking/abrading of concrete requires dust control measures.
- The City's consultant will be available to be on-site during the removal of concrete and sub slab materials. The Contractor is to provide the City representative 48 hours' notice of schedule/intent to remove concrete, asphalt, and sub slab materials.
- The Contractor to make available dust control techniques to remove hazards due to dust and carbon monoxide.
- Make available forced air mechanical system to remove contaminants at the source and away from workers. Concrete dust particles will require HEPA filtration at the source.
- Provide continuous ventilation during the removal of concrete, asphalt, and sub slab materials.
- All concrete, asphalt and sub slab materials removed from excavation are to be placed into a separate waste container. Materials will be tested for leachate quality criteria and disposed of appropriately. Weigh bill(s) are to be forwarded to City for record purposes.
- Materials removed from excavation, including concrete, asphalt, and sub slab materials are not to be used as backfill.
- Estimate 30 tonnes of material to be removed & disposed.
- Suitable vapour barrier protection is required to be installed where concrete and sub slab materials have been removed. Minimum 15 mil vapour barrier is to be installed meeting ASTM E1745-11 Class A, B & C.
- Follow ASTM E1643-10 (standard practice and procedure for installation of vapour retarder used in contact with earth or fill under concrete slabs). Water Vapor Permeance, ASTM E-96, with minimum Perms of 0.01. Pointing mastic to be applied to seams/joints to create continuous assembly.
- Notify City/representative upon installation of vapour barrier for Engineer inspection/observation of vapour barrier. No concrete is to be poured over vapour barrier until City/representative conducts inspection/observation.
- City/Representative will conduct air quality monitoring during concrete and sub slab removal of materials. Tests will include for carbon monoxide, % Lower Explosive Limit (%LEL), volatile organic compounds (VOCs), oxygen (O2), Hydrogen Sulphide (H2S), Particulate (size selective fractions). City/Representative will provide verbal results for air monitoring on-site. Exceedances for air quality will require the contractor to stop work and mitigate.

Risk Assessment

Task	Equipment	Hazard	Risk
Concrete cutting	Quick Cut Saw (gas)	Silica dust, respirable / inhalable dust, carbon monoxide	High
Concrete Breaking	Demolition hammer, pionjar (gas)	Silica dust, carbon monoxide, inhalable dust	Medium
Concrete Drilling	Rotary hammer	Silica dust, inhalable / respirable dust	Medium
Mastic Application	Caulking gun	VOCs	Low
Removal of sub slab materials	Excavator	Exhaust emissions, VOCs / gasoline vapours from sub slab	Medium
Removal of sub slab materials	Vacuum Truck	Exhaust emissions, VOCs / gasoline vapours from sub slab	Medium
Removal of sub slab materials	Hand digging	VOCs / gasoline vapours from sub slab	Medium

	TITLE: ENVIRONMENTAL NOTES			
	CUSTOMER: CITY OF NIAGARA FALLS			
	LOCATION: CITY OF NIAGARA FALLS - MUNICIPAL SERVICE CENTRE 3200 STANLEY AVENUE, NIAGARA FALLS, ON L2E 6S4			
	REV: 0	SCALE: NTS	PREPARED BY: T. CORTES	CHECKED BY: S. CHESNEY
	DATE: JANUARY 6, 2021	OESN JOB No: 00015.255		
DWG#:		EN-1		

Industrial Hygiene and Environmental Consulting

**1783 Highway 20, RR#2
Allanburg, Ontario
L0S 1A0
Phone: 1-888-271-2111**

ASBESTOS CONDITION ASSESSMENT 2019

Niagara Falls Service Centre

SUBMITTED TO: City of Niagara Falls

ISSUED: June 2019

OESN PROJECT #: 00015.237

Project Fact Sheet

OESN Project #: 00015.237

Report Title: Asbestos Condition Assessment 2019

Niagara Falls Service Centre
3200 Stanley Avenue
Niagara Falls, ON

Project Date(s): April 4, 2019

Report No.: 1 of 1

Report Date: June 25, 2019

Attachments: Appendix A – Asbestos Materials Register Table
Appendix B – Asbestos Materials Drawings

Author(s): R. Guay

Client Information

Client:	City of Niagara Falls	Mailing Address:
Client Contact:	Carmen Mignelli	4310 Queen Street
Phone #:	905-356-7521 ext.5211	P.O. Box 1023
Fax #:	905-374-7500	Niagara Falls, ON
Email:	cmignelli@niagarafalls.ca	L2E 6X5

Summary

Ontario Environmental & Safety Network Ltd. (OESN) under contract to the City of Niagara Falls (the City) was requested to visually inspect and comment on the condition of asbestos-containing materials within City owned buildings. The purpose of re-assessment is to comply with provincial asbestos laws which call for asbestos survey records to be updated at least once in each 12 month period.

The scope of work included site inspection and material assessment. On April 4, 2019 a representative from OESN conducted a site inspection within the Niagara Falls Service Centre to update asbestos-containing material records.

Findings of the condition assessment determined three (3) locations require remedial action.

The Asbestos Materials Register Table located in **Appendix A**, lists the condition of the asbestos-containing materials relative to the date of site inspection. The Asbestos Materials Drawing located in **Appendix B** provides the City with an approximate location of all asbestos-containing materials.

Ontario Environmental & Safety Network Ltd. warrants that the assessment was performed in accordance with sound engineering practices, current industry standards and the best scientific judgement applicable. Results are submitted pursuant to OESN's current terms and conditions of sale, including the company's standard warrant and limitation of liability provisions; and no responsibility is assumed for the manner in which the results are used or interpreted.


If you have any questions regarding the above information, please do not hesitate to contact our office at your convenience.

Regards,

A handwritten signature in blue ink that reads "Renee Guay". The signature is written in a cursive, flowing style.

Renee Guay
Consultant

Reviewed by,

A handwritten signature in blue ink that reads "Shaun Husband". The signature is written in a bold, blocky style.

Shaun Husband
Project Manager

Appendix A: Asbestos Materials Register Table

Drawing Location Number/Name	Homogeneous Number	Material	Mineral Type	Friable (Yes/No)	Quantity of Material	2012 Registry Condition	2013 Registry Condition	2014 Registry Condition	2015 Registry Condition	2016 Registry Condition	2018 Registry Condition	2019 Registry Condition	Inspection Date	Condition Change (Yes/No)	Recommendation
Waste Superintendent Office	1001	-	-	-	-	-	-	-	-	-	-	-	-	-	-
	1001	HC-01	Drywall (walls) - 1992 era	-	-	-	-	-	-	-	-	-	-	-	-
Parks/Forestry Supervisor Office	1002	-	Ceiling Tile	-	-	-	-	-	-	-	-	-	-	-	-
	1002	HC-01	Drywall (walls) - 1992 era	-	-	-	-	-	-	-	-	-	-	-	-
Vestibule	1003	HF-01	Floor Tile	-	-	-	-	-	-	-	-	-	-	-	-
	1003	HF-02	Floor Tile	-	-	-	-	-	-	-	-	-	-	-	-
	1003	-	Drywall (walls) - 1992 era	-	-	-	-	-	-	-	-	-	-	-	-
Operations Supervisor Office	1004	-	Ceiling Tile	-	-	-	-	-	-	-	-	-	-	-	-
	1004	-	Drywall (walls) - 1992 era	-	-	-	-	-	-	-	-	-	-	-	-
	1004	HW-02	Pyro-Block	-	-	-	-	-	-	-	-	-	-	-	-
Manager of Construction Office	1005	HC-01	Ceiling Tile	-	-	-	-	-	-	-	-	-	-	-	-
	1005	HT-01	Insulated Cement Fittings	Chrysotile	Yes	8 units	Satisfactory	Satisfactory	-	Satisfactory	Satisfactory	Satisfactory	Satisfactory	April 4, 2019	No
	1005	-	Drywall (walls) - 1992 era	-	-	-	-	-	-	-	-	-	-	-	-
Health and Safety Office	1006	-	Ceiling Tile	-	-	-	-	-	-	-	-	-	-	-	-
	1006	HC-01	Drywall (walls) - 1992 era	-	-	-	-	-	-	-	-	-	-	-	-
	1006	HT-01	Insulated Cement Fittings	Chrysotile	Yes	9 units	Satisfactory	Satisfactory	-	Satisfactory	Satisfactory	Satisfactory	Satisfactory	April 4, 2019	No
Manager of Facilities Office	1007	HT-04	Pipe Insulation	-	-	-	-	-	-	-	-	-	-	-	-
	1007	-	Drywall (walls) - 1992 era	-	-	-	-	-	-	-	-	-	-	-	-
	1007	HC-01	Ceiling Tile	-	-	-	-	-	-	-	-	-	-	-	-
Water Department Office	1008	HC-02	Ceiling Tile	-	-	-	-	-	-	-	-	-	-	-	-
	1008	HT-01	Insulated Cement Fittings	Chrysotile	Yes	6 units	Satisfactory	Satisfactory	-	Satisfactory	Satisfactory	Satisfactory	Satisfactory	April 4, 2019	No
	1008	HT-04	Pipe Insulation	-	-	-	-	-	-	-	-	-	-	-	-
Vestibule	1009	-	Drywall (walls) - 1992 era	-	-	-	-	-	-	-	-	-	-	-	-
	1009	HC-01	Ceiling Tile	-	-	-	-	-	-	-	-	-	-	-	-
	1009	HT-04	Pipe Insulation	-	-	-	-	-	-	-	-	-	-	-	-
Reception/Dipatch	1010	HF-01	Floor Tile	-	-	-	-	-	-	-	-	-	-	-	-
	1010	HF-02	Floor Tile	-	-	-	-	-	-	-	-	-	-	-	-
	1010	-	Drywall (walls) - 1992 era	-	-	-	-	-	-	-	-	-	-	-	-
Shift Foreman	1011	HC-01	Ceiling Tile	-	-	-	-	-	-	-	-	-	-	-	-
	1011	HC-02	Ceiling Tile	-	-	-	-	-	-	-	-	-	-	-	-
	1011	HT-01	Insulated Cement Fittings	Chrysotile	Yes	4 units	Satisfactory	Satisfactory	-	Satisfactory	Satisfactory	Satisfactory	Satisfactory	April 4, 2019	No
Corridor	1012	HF-01	Floor Tile	-	-	-	-	-	-	-	-	-	-	-	-
	1012	HF-02	Floor Tile	-	-	-	-	-	-	-	-	-	-	-	-
	1012	-	Drywall (walls) - 1992 era	-	-	-	-	-	-	-	-	-	-	-	-
Men's Washroom	1013	HW-02	Pyro-Block	-	-	-	-	-	-	-	-	-	-	-	-
	1013	HC-01	Ceiling Tile	-	-	-	-	-	-	-	-	-	-	-	-
	1013	HT-01	Insulated Cement Fittings	Chrysotile	Yes	5 units	Satisfactory	Satisfactory	-	Satisfactory	Satisfactory	Satisfactory	Satisfactory	April 4, 2019	No
Women's Washroom	1014	HT-04	Pipe Insulation	-	-	-	-	-	-	-	-	-	-	-	-
	1014	HF-01	Floor Tile	-	-	-	-	-	-	-	-	-	-	-	-
	1014	HF-02	Floor Tile	-	-	-	-	-	-	-	-	-	-	-	-
Staff Lounge	1015	HC-01	Ceiling Tile	-	-	-	-	-	-	-	-	-	-	-	-
	1015	HC-02	Ceiling Tile	-	-	-	-	-	-	-	-	-	-	-	-
	1015	HM-01	Sink Underlining	Chrysotile	No	1 unit	Satisfactory	Satisfactory	-	Satisfactory	Satisfactory	Satisfactory	Satisfactory	April 4, 2019	No
Boardroom 1	1016	-	Drywall (walls) - 1992 era	-	-	-	-	-	-	-	-	-	-	-	-
	1016	HC-01	Ceiling Tile	-	-	-	-	-	-	-	-	-	-	-	-
	1016	HF-01	Floor Tile	-	-	-	-	-	-	-	-	-	-	-	-
Men's Washroom	1017	HF-02	Floor Tile	-	-	-	-	-	-	-	-	-	-	-	-
	1017	HC-01	Ceiling Tile	-	-	-	-	-	-	-	-	-	-	-	-
	1017	HT-01	Insulated Cement Fittings	Chrysotile	Yes	3 units	Satisfactory	Satisfactory	-	Satisfactory	Satisfactory	Satisfactory	Satisfactory	April 4, 2019	No
Storage A	1018	HF-01	Floor Tile	-	-	-	-	-	-	-	-	-	-	-	-
	1018	HF-02	Floor Tile	-	-	-	-	-	-	-	-	-	-	-	-
	1018	-	Drywall (walls) - 1992 era	-	-	-	-	-	-	-	-	-	-	-	-
Storage B	1019	HC-01	Ceiling Tile	-	-	-	-	-	-	-	-	-	-	-	-
	1019	HF-01	Floor Tile	-	-	-	-	-	-	-	-	-	-	-	-
	1019	-	Drywall (walls) - 1992 era	-	-	-	-	-	-	-	-	-	-	-	-
Office A	1020	HC-01	Ceiling Tile	-	-	-	-	-	-	-	-	-	-	-	-
	1020	-	Drywall (walls) - 1992 era	-	-	-	-	-	-	-	-	-	-	-	-
	1020	-	Ceiling Tile	-	-	-	-	-	-	-	-	-	-	-	-
Corridor	1021	-	Drywall (walls) - 1992 era	-	-	-	-	-	-	-	-	-	-	-	-
	1021	HC-01	Ceiling Tile	-	-	-	-	-	-	-	-	-	-	-	-
Office B	1022	-	Drywall (walls) - 1992 era	-	-	-	-	-	-	-	-	-	-	-	-
	1022	HC-01	Ceiling Tile	-	-	-	-	-	-	-	-	-	-	-	-

Drawing Location Number/Name	Homogeneous Number	Material	Mineral Type	Friable (Yes/No)	Quantity of Material	2012 Registry Condition	2013 Registry Condition	2014 Registry Condition	2015 Registry Condition	2016 Registry Condition	2018 Registry Condition	2019 Registry Condition	Inspection Date	Condition Change (Yes/No)	Recommendation	
Lunch/Mustering Area	1023	HF-01	Floor Tile	-	-	-	-	-	-	-	-	-	-	-	-	
	1023	HF-02	Floor Tile	-	-	-	-	-	-	-	-	-	-	-	-	
	1023	HW-01	Drywall (walls)	Chrysotile	Yes	1440 SF	Satisfactory	Satisfactory	-	Satisfactory	Satisfactory	Satisfactory	Satisfactory	April 4, 2019	No	-
	1023	HW-02	Pyro-Block	-	-	-	-	-	-	-	-	-	-	-	-	-
	1023	HC-01	Ceiling Tile	-	-	-	-	-	-	-	-	-	-	-	-	-
	1023	HT-02	Pipe Insulation	-	-	-	-	-	-	-	-	-	-	-	-	-
	1023	HT-01	Insulated Cement Fittings	Chrysotile	Yes	5 units	Satisfactory	Satisfactory	-	Satisfactory	Satisfactory	Satisfactory	Satisfactory	April 4, 2019	No	-
	1023	HM-02	Caulking	Chrysotile	No	26 LF	Satisfactory	Satisfactory	-	Satisfactory	Satisfactory	Satisfactory	Satisfactory	April 4, 2019	No	-
Corridor	1024	HF-01	Floor Tile	-	-	-	-	-	-	-	-	-	-	-	-	
	1024	HF-02	Floor Tile	-	-	-	-	-	-	-	-	-	-	-	-	
	1024	-	Drywall (walls) - 1992 era	-	-	-	-	-	-	-	-	-	-	-	-	-
	1024	HC-01	Ceiling Tile	-	-	-	-	-	-	-	-	-	-	-	-	-
	1024	HT-02	Pipe Insulation	-	-	-	-	-	-	-	-	-	-	-	-	-
	1024	HT-01	Insulated Cement Fittings	Chrysotile	Yes	3 units	Satisfactory	Satisfactory	-	Satisfactory	Satisfactory	Satisfactory	Satisfactory	April 4, 2019	No	-
	1024	HT-04	Pipe Insulation	-	-	-	-	-	-	-	-	-	-	-	-	-
	1024	HF-01	Floor Tile	-	-	-	-	-	-	-	-	-	-	-	-	-
Corridor	1025	HF-02	Floor Tile	-	-	-	-	-	-	-	-	-	-	-	-	-
	1025	HW-01	Drywall (walls)	Chrysotile	Yes	276 SF	Satisfactory	Unsatisfactory	-	Satisfactory	Satisfactory	Satisfactory	Satisfactory	April 4, 2019	No	-
	1025	HC-01	Ceiling Tile	-	-	-	-	-	-	-	-	-	-	-	-	-
	1025	HT-01	Insulated Cement Fittings	Chrysotile	Yes	5 units	Satisfactory	Satisfactory	-	Satisfactory	Satisfactory	Satisfactory	Satisfactory	April 4, 2019	No	-
	1025	HT-02	Pipe Insulation	-	-	-	-	-	-	-	-	-	-	-	-	-
	1025	HM-03	Caulking	-	-	-	-	-	-	-	-	-	-	-	-	-
	1026	HF-01	Floor Tile	-	-	-	-	-	-	-	-	-	-	-	-	-
	1026	HF-02	Floor Tile	-	-	-	-	-	-	-	-	-	-	-	-	-
Corridor	1026	-	Drywall (walls) - 1992 era	-	-	-	-	-	-	-	-	-	-	-	-	-
	1026	HC-01	Ceiling Tile	-	-	-	-	-	-	-	-	-	-	-	-	-
	1026	HM-02	Caulking	Chrysotile	No	208 LF	Satisfactory	Satisfactory	-	Satisfactory	Satisfactory	Satisfactory	Satisfactory	April 4, 2019	No	-
	1027	HF-01	Floor Tile	-	-	-	-	-	-	-	-	-	-	-	-	-
	1027	HF-02	Floor Tile	-	-	-	-	-	-	-	-	-	-	-	-	-
Streets Foreman Office	1027	-	Drywall (walls) - 1992 era	-	-	-	-	-	-	-	-	-	-	-	-	-
	1027	HC-01	Ceiling Tile	-	-	-	-	-	-	-	-	-	-	-	-	-
	1028	HF-01	Floor Tile	-	-	-	-	-	-	-	-	-	-	-	-	-
	1028	HF-02	Floor Tile	-	-	-	-	-	-	-	-	-	-	-	-	-
Streets Foreman Office	1028	-	Drywall (walls) - 1992 era	-	-	-	-	-	-	-	-	-	-	-	-	-
	1028	HC-01	Ceiling Tile	-	-	-	-	-	-	-	-	-	-	-	-	-
	1029	-	Drywall (walls) - 1992 era	-	-	-	-	-	-	-	-	-	-	-	-	-
	1029	HC-01	Ceiling Tile	-	-	-	-	-	-	-	-	-	-	-	-	-
Equipment Supervisor Office	1030	HF-01	Floor Tile	-	-	-	-	-	-	-	-	-	-	-	-	-
	1030	HF-02	Floor Tile	-	-	-	-	-	-	-	-	-	-	-	-	-
	1030	-	Drywall (walls) - 1992 era	-	-	-	-	-	-	-	-	-	-	-	-	-
	1030	HC-01	Ceiling Tile	-	-	-	-	-	-	-	-	-	-	-	-	-
Sanitary Foreman Office	1031	HF-01	Floor Tile	-	-	-	-	-	-	-	-	-	-	-	-	-
	1031	HF-02	Floor Tile	-	-	-	-	-	-	-	-	-	-	-	-	-
	1031	-	Drywall (walls) - 1992 era	-	-	-	-	-	-	-	-	-	-	-	-	-
	1031	HC-01	Ceiling Tile	-	-	-	-	-	-	-	-	-	-	-	-	-
Sewer Foreman Office	1032	HF-01	Floor Tile	-	-	-	-	-	-	-	-	-	-	-	-	-
	1032	HF-02	Floor Tile	-	-	-	-	-	-	-	-	-	-	-	-	-
	1032	-	Drywall (walls) - 1992 era	-	-	-	-	-	-	-	-	-	-	-	-	-
	1032	HC-01	Ceiling Tile	-	-	-	-	-	-	-	-	-	-	-	-	-
Storage A	1033	HF-01	Floor Tile	-	-	-	-	-	-	-	-	-	-	-	-	-
	1033	HF-02	Floor Tile	-	-	-	-	-	-	-	-	-	-	-	-	-
	1033	-	Drywall (walls) - 1992 era	-	-	-	-	-	-	-	-	-	-	-	-	-
	1033	HC-01	Ceiling Tile	-	-	-	-	-	-	-	-	-	-	-	-	-
Storage B	1034	HF-01	Floor Tile	-	-	-	-	-	-	-	-	-	-	-	-	-
	1034	HF-02	Floor Tile	-	-	-	-	-	-	-	-	-	-	-	-	-
	1034	-	Drywall (walls) - 1992 era	-	-	-	-	-	-	-	-	-	-	-	-	-
	1034	HC-01	Ceiling Tile	-	-	-	-	-	-	-	-	-	-	-	-	-
Storage C	1035	HF-01	Floor Tile	-	-	-	-	-	-	-	-	-	-	-	-	-
	1035	HF-02	Floor Tile	-	-	-	-	-	-	-	-	-	-	-	-	-
	1035	-	Drywall (walls) - 1992 era	-	-	-	-	-	-	-	-	-	-	-	-	-
	1035	HC-01	Ceiling Tile	-	-	-	-	-	-	-	-	-	-	-	-	-
Storage D	1036	HF-01	Floor Tile	-	-	-	-	-	-	-	-	-	-	-	-	-
	1036	HF-02	Floor Tile	-	-	-	-	-	-	-	-	-	-	-	-	-
	1036	-	Drywall (walls) - 1992 era	-	-	-	-	-	-	-	-	-	-	-	-	-
	1036	HC-01	Ceiling Tile	-	-	-	-	-	-	-	-	-	-	-	-	-
	1036	HT-02	Pipe Insulation	-	-	-	-	-	-	-	-	-	-	-	-	-
Vestibule	1037	HF-01	Floor Tile	-	-	-	-	-	-	-	-	-	-	-	-	-
	1037	HF-02	Floor Tile	-	-	-	-	-	-	-	-	-	-	-	-	-
	1037	-	Drywall (walls) - 1992 era	-	-	-	-	-	-	-	-	-	-	-	-	-
	1037	HC-01	Ceiling Tile	-	-	-	-	-	-	-	-	-	-	-	-	-
Women's Locker	1038	HF-01	Floor Tile	-	-	-	-	-	-	-	-	-	-	-	-	-
	1038	HF-02	Floor Tile	-	-	-	-	-	-	-	-	-	-	-	-	-
	1038	-	Drywall (walls) - 1992 era	-	-	-	-	-	-	-	-	-	-	-	-	-
	1038	HC-01	Ceiling Tile	-	-	-	-	-	-	-	-	-	-	-	-	-
	1038	HC-02	Ceiling Tile	-	-	-	-	-	-	-	-	-	-	-	-	-
	1038	HT-01	Insulated Cement Fittings	Chrysotile	Yes	3 units	Satisfactory	Satisfactory	-	Satisfactory	Satisfactory	Satisfactory	Unsatisfactory	April 4, 2019	Yes	Encapsulate (Work Item 1)
	1038	HT-04	Pipe Insulation	-	-	-	-	-	-	-	-	-	-	-	-	-
Women's Washroom and Shower	1039	HF-01	Floor Tile	-	-	-	-	-	-	-	-	-	-	-	-	-
	1039	HF-02	Floor Tile	-	-	-	-	-	-	-	-	-	-	-	-	-
	1039	-	Drywall (walls) - 1992 era	-	-	-	-	-	-	-	-	-	-	-	-	-
	1039	HC-01	Ceiling Tile	-	-	-	-	-	-	-	-	-	-	-	-	-
	1039	HT-01	Insulated Cement Fittings	Chrysotile	Yes	3 units	Satisfactory	Satisfactory	-	Satisfactory	Satisfactory	Satisfactory	Satisfactory	April 4, 2019	No	-
Map Reading	1039	HT-04	Pipe Insulation	-	-	-	-	-	-	-	-	-	-	-	-	-
	1041	HF-01	Floor Tile	-	-	-	-	-	-	-	-	-	-	-	-	-
	1041	HF-02	Floor Tile	-	-	-	-	-	-	-	-	-	-	-	-	-
	1041	HC-01	Ceiling Tile	-	-	-	-	-	-	-	-	-	-	-	-	-

Drawing Location Number/Name	Homogeneous Number	Material	Mineral Type	Friable (Yes/No)	Quantity of Material	2012 Registry Condition	2013 Registry Condition	2014 Registry Condition	2015 Registry Condition	2016 Registry Condition	2018 Registry Condition	2019 Registry Condition	Inspection Date	Condition Change (Yes/No)	Recommendation	
Men's Locker Room Storage	1042	-	Drywall (walls) - 1992 era	-	-	-	-	-	-	-	-	-	-	-	-	
	1043	HC-02	Ceiling Tile	-	-	-	-	-	-	-	-	-	-	-	-	
	1043	HT-04	Pipe Insulation	-	-	-	-	-	-	-	-	-	-	-	-	
	1043	HT-03	Parging	-	-	-	-	-	-	-	-	-	-	-	-	
	1043	HT-01	Insulated Cement Fittings	Chrysotile	Yes	9 units	Satisfactory	Satisfactory	-	Satisfactory	Satisfactory	Satisfactory	Satisfactory	April 4, 2019	No	-
Men's Washroom	1044	HC-01	Ceiling Tile	-	-	-	-	-	-	-	-	-	-	-	-	
	1044	HW-01	Drywall (walls)	Chrysotile	Yes	320 SF	Satisfactory	Satisfactory	-	Satisfactory	Satisfactory	Satisfactory	Satisfactory	April 4, 2019	No	-
	1044	HT-02	Pipe Insulation	-	-	-	-	-	-	-	-	-	-	-	-	
	1044	HT-04	Pipe Insulation	-	-	-	-	-	-	-	-	-	-	-	-	
Men's Showers	1044	HT-01	Insulated Cement Fittings	Chrysotile	Yes	12 units	Satisfactory	Satisfactory	-	Satisfactory	Satisfactory	Satisfactory	Satisfactory	April 4, 2019	No	-
	1045	HC-01	Ceiling Tile	-	-	-	-	-	-	-	-	-	-	-	-	
	1045	HC-02	Ceiling Tile	-	-	-	-	-	-	-	-	-	-	-	-	
	1045	HT-01	Insulated Cement Fittings	Chrysotile	Yes	8 units	Satisfactory	Satisfactory	-	Satisfactory	Satisfactory	Satisfactory	Satisfactory	April 4, 2019	No	-
Janitor Room Vestibule (by Shift Foreman Office)	1046	-	Drywall (walls) - 1992 era	-	-	-	-	-	-	-	-	-	-	-	-	
	1047	HF-01	Floor Tile	-	-	-	-	-	-	-	-	-	-	-	-	
	1047	HF-02	Floor Tile	-	-	-	-	-	-	-	-	-	-	-	-	
	1047	HC-01	Ceiling Tile	-	-	-	-	-	-	-	-	-	-	-	-	
	1048	HF-01	Floor Tile	-	-	-	-	-	-	-	-	-	-	-	-	
Men's Locker Room Vestibule to	1048	HF-02	Floor Tile	-	-	-	-	-	-	-	-	-	-	-	-	
	1048	HC-01	Ceiling Tile	-	-	-	-	-	-	-	-	-	-	-	-	
	1048	HT-01	Insulated Cement Fittings	Chrysotile	Yes	2 units	Satisfactory	Satisfactory	-	Satisfactory	Satisfactory	Satisfactory	Satisfactory	April 4, 2019	No	-
	1048	HT-02	Pipe Insulation	-	-	-	-	-	-	-	-	-	-	-	-	
Maintenance Garage	1049	HT-01	Insulated Cement Fittings	Chrysotile	Yes	19 units	Satisfactory	Satisfactory	-	Satisfactory	Satisfactory	Satisfactory	Satisfactory	April 4, 2019	No	-
	1049	HT-02	Pipe Insulation	-	-	-	-	-	-	-	-	-	-	-	-	
Corridor	1050	HW-01	Drywall (walls)	Chrysotile	Yes	5 SF	Satisfactory	Unsatisfactory	-	Satisfactory	Satisfactory	Satisfactory	Unsatisfactory	April 4, 2019	Yes	Repair (Work Item 3)
	1050	HW-01	Drywall (ceiling)	Chrysotile	Yes	255 SF	Satisfactory	Satisfactory	-	Satisfactory	Satisfactory	Satisfactory	Satisfactory	April 4, 2019	No	-
Stores Office	1052	HW-01	Drywall (ceiling)	Chrysotile	Yes	255 SF	Satisfactory	Satisfactory	-	Satisfactory	Satisfactory	Satisfactory	Satisfactory	April 4, 2019	No	-
	1053	HT-01	Insulated Cement Fittings	Chrysotile	Yes	2 units	Satisfactory	Satisfactory	-	Satisfactory	Satisfactory	Satisfactory	Satisfactory	April 4, 2019	No	-
Water Department	1053	HT-02	Pipe Insulation	-	-	-	-	-	-	-	-	-	-	-	-	
	1055	HF-04	Floor Tile	-	-	-	-	-	-	-	-	-	-	-	-	
Men's Washroom	1055B	HT-02	Pipe Insulation	-	-	-	-	-	-	-	-	-	-	-	-	
	1055B	HT-02	Pipe Insulation	-	-	-	-	-	-	-	-	-	-	-	-	
Welding	1057	HM-02	Caulking	Chrysotile	No	1 LF	Satisfactory	Satisfactory	-	Satisfactory	Satisfactory	Satisfactory	Satisfactory	April 4, 2019	No	-
Sign Shop	1059	HM-04	Sink Underlining	-	-	-	-	-	-	-	-	-	-	-	-	
Mechanical Room	2001	HW-01	Drywall (walls)	Chrysotile	Yes	250 SF	Satisfactory	Satisfactory	-	Satisfactory	Satisfactory	Satisfactory	Satisfactory	April 4, 2019	No	-
	2001	-	Insulated Cement Fittings	-	-	-	-	-	-	-	-	-	-	-	-	
	2001	HT-02	Pipe Insulation	-	-	-	-	-	-	-	-	-	-	-	-	
	2001	HT-04	Pipe Insulation	-	-	-	-	-	-	-	-	-	-	-	-	
Mechanical Room Storage	2002	HW-01	Drywall (walls)	Chrysotile	Yes	185 SF	Satisfactory	Satisfactory	-	Satisfactory	Satisfactory	Satisfactory	Satisfactory	April 4, 2019	No	-
	2002	HT-02	Pipe Insulation	-	-	-	-	-	-	-	-	-	-	-	-	
Water Department Corridor	2003	HF-01	Floor Tile	-	-	-	-	-	-	-	-	-	-	-	-	
	2003	HF-02	Floor Tile	-	-	-	-	-	-	-	-	-	-	-	-	
	2003	-	Drywall (walls) - 1992 era	-	-	-	-	-	-	-	-	-	-	-	-	
	2003	HC-01	Ceiling Tile	-	-	-	-	-	-	-	-	-	-	-	-	
Corridor to Office	2004	HF-01	Floor Tile	-	-	-	-	-	-	-	Satisfactory	Satisfactory	-	-	-	
	2004	HF-02	Floor Tile	-	-	-	-	-	-	-	-	-	-	-	-	
	2004	-	Drywall (walls) - 1992 era	-	-	-	-	-	-	-	Satisfactory	Satisfactory	-	-	-	
	2004	HC-01	Ceiling Tile	-	-	-	-	-	-	-	-	-	-	-	-	
Office A	2005	HF-01	Floor Tile	-	-	-	-	-	-	-	Satisfactory	Satisfactory	-	-	-	
	2005	HF-02	Floor Tile	-	-	-	-	-	-	-	Satisfactory	Satisfactory	-	-	-	
	2005	-	Drywall (walls) - 1992 era	-	-	-	-	-	-	-	Satisfactory	Satisfactory	-	-	-	
	2005	HC-01	Ceiling Tile	-	-	-	-	-	-	-	Satisfactory	Satisfactory	-	-	-	
Office B	2006	HF-01	Floor Tile	-	-	-	-	-	-	-	-	-	-	-	-	
	2006	HF-02	Floor Tile	-	-	-	-	-	-	-	-	-	-	-	-	
	2006	-	Drywall (walls) - 1992 era	-	-	-	-	-	-	-	Satisfactory	Satisfactory	-	-	-	
	2006	HC-01	Ceiling Tile	-	-	-	-	-	-	-	-	-	-	-	-	
Storage	2007	HF-01	Floor Tile	-	-	-	-	-	-	-	-	-	-	-	-	
	2007	HF-02	Floor Tile	-	-	-	-	-	-	-	-	-	-	-	-	
	2007	-	Drywall (walls) - 1992 era	-	-	-	-	-	-	-	Satisfactory	Satisfactory	-	-	-	
	2007	HC-01	Ceiling Tile	-	-	-	-	-	-	-	-	-	-	-	-	
HVAC Closet	2008	HF-01	Floor Tile	-	-	-	-	-	-	-	-	-	-	-	-	
	2008	HF-02	Floor Tile	-	-	-	-	-	-	-	-	-	-	-	-	
	2008	-	Drywall (walls) - 1992 era	-	-	-	-	-	-	-	-	-	-	-	-	
Meeting Room	2009	HF-01	Floor Tile	-	-	-	-	-	-	-	-	-	-	-	-	
	2009	HF-02	Floor Tile	-	-	-	-	-	-	-	-	-	-	-	-	
	2009	-	Drywall (walls) - 1992 era	-	-	-	-	-	-	-	-	-	-	-	-	
	2009	HC-01	Ceiling Tile	-	-	-	-	-	-	-	-	-	-	-	-	
Office C	2010	HF-01	Floor Tile	-	-	-	-	-	-	-	Satisfactory	Satisfactory	-	-	-	
	2010	HF-02	Floor Tile	-	-	-	-	-	-	-	-	-	-	-	-	
	2010	-	Drywall (walls) - 1992 era	-	-	-	-	-	-	-	Satisfactory	Satisfactory	-	-	-	
	2010	HC-01	Ceiling Tile	-	-	-	-	-	-	-	-	-	-	-	-	
Washroom	2011	HF-01	Floor Tile	-	-	-	-	-	-	-	Satisfactory	Satisfactory	-	-	-	
	2011	HF-02	Floor Tile	-	-	-	-	-	-	-	Satisfactory	Satisfactory	-	-	-	
	2011	-	Drywall (walls) - 1992 era	-	-	-	-	-	-	-	Satisfactory	Satisfactory	-	-	-	
	2011	HC-01	Ceiling Tile	-	-	-	-	-	-	-	Satisfactory	Satisfactory	-	-	-	
Office D	2012	HF-01	Floor Tile	-	-	-	-	-	-	-	-	-	-	-	-	
	2012	HF-02	Floor Tile	-	-	-	-	-	-	-	-	-	-	-	-	
	2012	-	Drywall (walls) - 1992 era	-	-	-	-	-	-	-	Satisfactory	Satisfactory	-	-	-	
Office E	2013	HC-01	Ceiling Tile	-	-	-	-	-	-	-	-	-	-	-	-	
	2013	HF-01	Floor Tile	-	-	-	-	-	-	-	-	-	-	-	-	
	2013	HF-02	Floor Tile	-	-	-	-	-	-	-	-	-	-	-	-	
	2013	-	Drywall (walls) - 1992 era	-	-	-	-	-	-	-	Satisfactory	Satisfactory	-	-	-	
2013	HC-01	Ceiling Tile	-	-	-	-	-	-	-	-	-	-	-	-		

Drawing Location Number/Name	Homogeneous Number	Material	Mineral Type	Friable (Yes/No)	Quantity of Material	2012 Registry Condition	2013 Registry Condition	2014 Registry Condition	2015 Registry Condition	2016 Registry Condition	2018 Registry Condition	2019 Registry Condition	Inspection Date	Condition Change (Yes/No)	Recommendation
Office F	2014	HF-01	Floor Tile	-	-	-	-	-	-	-	-	-	-	-	-
	2014	HF-02	Floor Tile	-	-	-	-	-	-	-	-	-	-	-	-
	2014	-	Drywall (walls) - 1992 era	-	-	-	-	-	-	-	-	-	-	-	-
	2014	HC-01	Ceiling Tile	-	-	-	-	-	-	-	-	-	-	-	-
Stairs to Outdoors	2015	-	Drywall (walls) - 1992 era	-	-	-	-	-	-	-	-	-	-	-	-
	2015	HC-01	Ceiling Tile	-	-	-	-	-	-	-	-	-	-	-	-
Stairs to Main Floor	2016	HF-01	Floor Tile	-	-	-	-	-	-	-	-	-	-	-	-
	2016	HF-02	Floor Tile	-	-	-	-	-	-	-	Satisfactory	Satisfactory	-	-	-
	2016	-	Drywall (walls) - 1992 era	-	-	-	-	-	-	-	-	-	-	-	-
	2016	HC-01	Ceiling Tile	-	-	-	-	-	-	-	-	-	-	-	-
	2016	HM-02	Caulking	Chrysotile	No	1 LF	Satisfactory	Satisfactory	-	Satisfactory	Satisfactory	Satisfactory	Satisfactory	-	-

Appendix B: Asbestos Materials Drawings





TITLE:
**ASBESTOS CONDITION
 ASSESSMENT 2019**

CUSTOMER:
CITY OF NIAGARA FALLS

LOCATION:
**MUNICIPAL SERVICE CENTER
 MAIN BUILDING
 3200 STANLEY AVENUE
 NIAGARA FALLS, ONTARIO**

1001 FUNCTIONAL SPACE
 NUMBER ASSIGNED

**ASBESTOS - CONTAINING
 MATERIALS**

-  DRYWALL WALLS
-  INTERIOR CAULKING
-  CEMENT FITTING
-  SINK UNDERLINING



REV. 0 SCALE: N. T. S.

DRAWN BY: T. CORTES

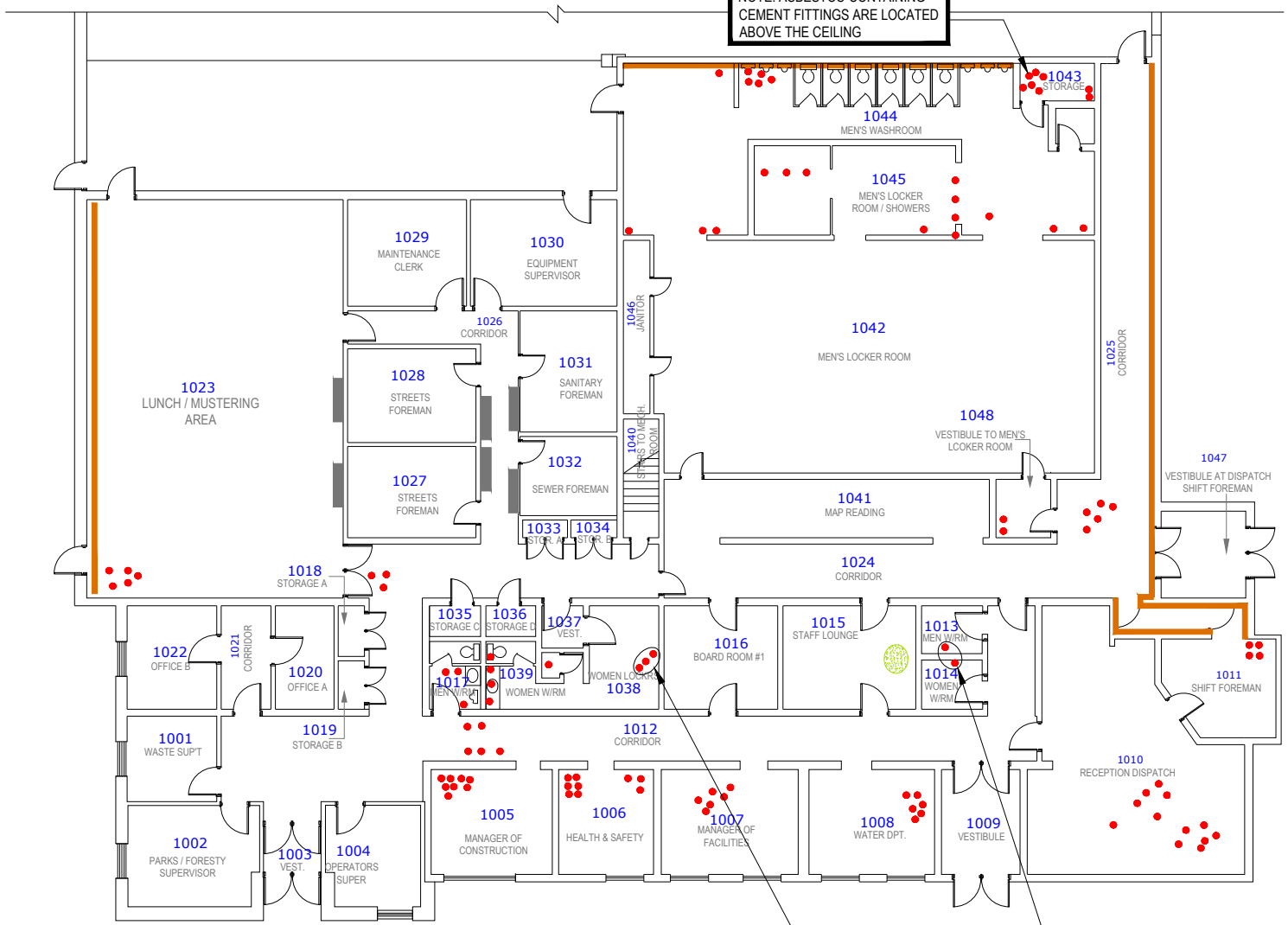
CHECKED BY: S. HUSBAND

DATE: JUNE 2019

OESN JOB No: 00015.237

DWG #: CONF-MSCMB-2019-01

NOTE: ASBESTOS-CONTAINING
 CEMENT FITTINGS ARE LOCATED
 ABOVE THE CEILING



WORK ITEM # 1

WORK ITEM # 2





TITLE:
**ASBESTOS CONDITION
 ASSESSMENT 2019**

CUSTOMER:
CITY OF NIAGARA FALLS

LOCATION:
**MUNICIPAL SERVICE CENTER
 MAIN BUILDING
 3200 STANLEY AVENUE
 NIAGARA FALLS, ONTARIO**

1001 FUNCTIONAL SPACE
 NUMBER ASSIGNED

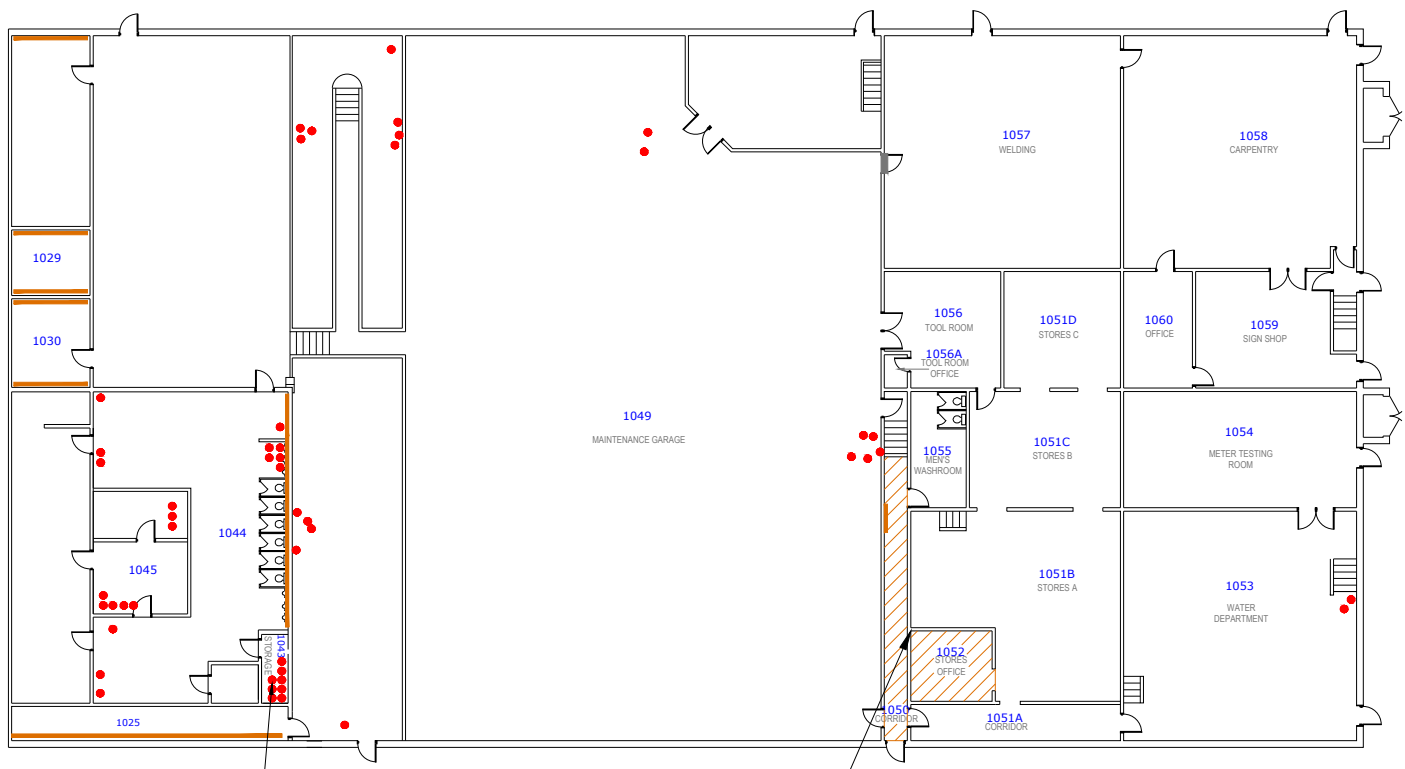
**ASBESTOS - CONTAINING
 MATERIALS**

-  DRYWALL CEILING
-  DRYWALL WALLS
-  INTERIOR CAULKING
-  CEMENT FITTING



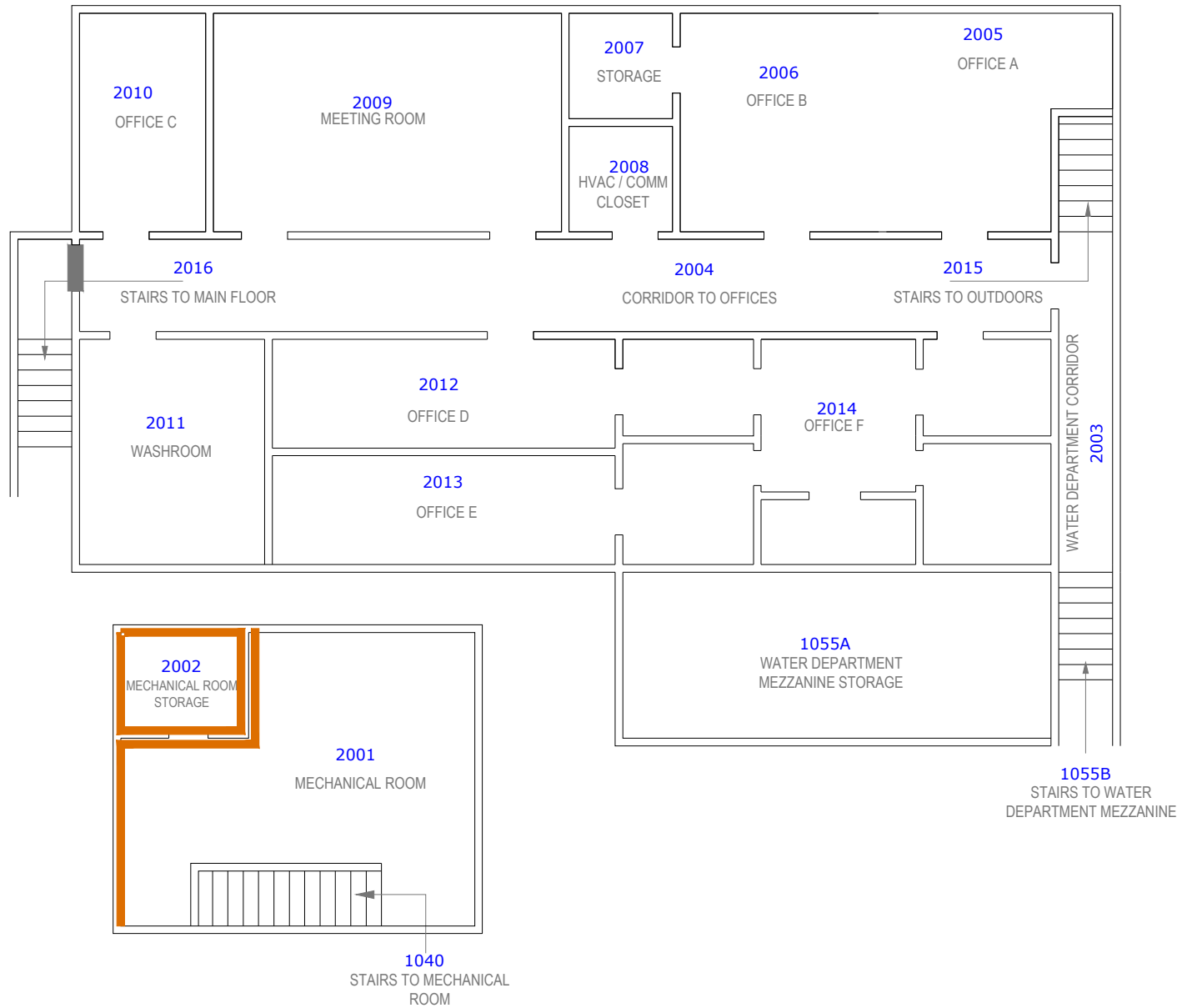


REV. 0	SCALE: N. T. S.
DRAWN BY: T. CORTES	
CHECKED BY: S. HUSBAND	
DATE: JUNE 2019	
OESN JOB No: 00015.237	
DWG #: CONF-MSCMB-2019-02	



**NOTE: ASBESTOS-CONTAINING
 CEMENT FITTINGS ARE LOCATED
 ABOVE THE CEILING**

WORK ITEM # 3




TITLE:
**ASBESTOS CONDITION
 ASSESSMENT 2019**


CUSTOMER:
CITY OF NIAGARA FALLS

LOCATION:
**MUNICIPAL SERVICE CENTER
 MAIN BUILDING
 3200 STANLEY AVENUE
 NIAGARA FALLS, ONTARIO**

2001 FUNCTIONAL SPACE
 NUMBER ASSIGNED

**ASBESTOS - CONTAINING
 MATERIALS**

 DRYWALL WALLS

 INTERIOR CAULKING



REV.	0	SCALE:	N. T. S.
DRAWN BY:	T. CORTES		
CHECKED BY:	S. HUSBAND		
DATE:	JUNE 2019		
OESN JOB No:	00015.237		
DWG #:	CONF-MSCMB-2019-03		

2021: THERMAL CEMENT FITTINGS REMOVED FROM SPACE INCLUDING ABOVE CEILING

TITLE:
ASBESTOS LOCATION DRAWINGS
2021

CUSTOMER:
CITY OF NIAGARA FALLS

LOCATION:
MUNICIPAL SERVICE CENTER
MAIN BUILDING
3200 STANLEY AVENUE
NIAGARA FALLS, ONTARIO

1001 FUNCTIONAL SPACE
NUMBER ASSIGNED

ASBESTOS - CONTAINING
MATERIALS

DRYWALL WALLS

— INTERIOR CAULKING

● CEMENT FITTING



REV. 0 SCALE: N. T. S.

DRAWN BY: T. CORTES

CHECKED BY: S. HUSBAND

DATE: MARCH 25, 2021

OESH JOB No: 00015.258

DWG #: CONF-MSCMB-2021-01

1023 LUNCH / MUSTERING AREA

1029 MAINTENANCE CLERK

1030 EQUIPMENT SUPERVISOR

1028 STREETS FOREMAN

1031 SANITARY FOREMAN

1027 STREETS FOREMAN

1032 SEWER FOREMAN

1018 STORAGE A

1022 OFFICE B

1020 OFFICE A

1001 WASTE SUPT

1019 STORAGE B

1002 PARKS / FORESTRY SUPERVISOR

1003 VEST.

1004 OPERATORS SUPER

1035 STORAGE C

1036 STORAGE D

1037 VEST.

1039 MEN WIRM

1038 WOMEN WIRM

1005 MANAGER OF CONSTRUCTION

1006 HEALTH & SAFETY

1007 MANAGER OF FACILITIES

1008 WATER DPT.

1009 VESTIBULE

1012 CORRIDOR

1016 BOARD ROOM #1

1015 STAFF LOUNGE

1013 MEN WIRM

1014 WOMEN WIRM

1011 SHIFT FOREMAN

1010 RECEPTION DISPATCH

1044 MENS WASHROOM

1045 MENS LOCKER ROOM / SHOWERS

1042 MENS LOCKER ROOM

1048 VESTIBULE TO MENS LOCKER ROOM

1041 MAP READING

1024 CORRIDOR

1047 VESTIBULE AT DISPATCH SHIFT FOREMAN

1043

2021: THERMAL CEMENT PIPE FITTINGS REMOVED ABOVE FALSE CEILING

2021: THERMAL CEMENT PIPE FITTINGS REMOVED ABOVE FALSE CEILING

NOTE: (1) ASBESTOS SURVEY NOT COMPLETELY INTRUSIVE. IN THE EVENT SUSPECT ASBESTOS MATERIALS THAT ARE NOT IDENTIFIED IN THE ASBESTOS SURVEY ARE DISCOVERED THROUGH RENOVATION/DEMOLITION, CONTRACTOR TO REQUEST VERIFICATION FROM THE OWNERS CONSULTANT.

TITLE:
ASBESTOS LOCATION DRAWINGS
2021

CUSTOMER:
CITY OF NIAGARA FALLS

LOCATION:
MUNICIPAL SERVICE CENTER
MAIN BUILDING
3200 STANLEY AVENUE
NIAGARA FALLS, ONTARIO

1001 FUNCTIONAL SPACE
NUMBER ASSIGNED

ASBESTOS - CONTAINING
MATERIALS

— DRYWALL CEILING
— DRYWALL WALLS
— INTERIOR CAULKING
● CEMENT FITTING



REV. 0 SCALE: N. T. S.

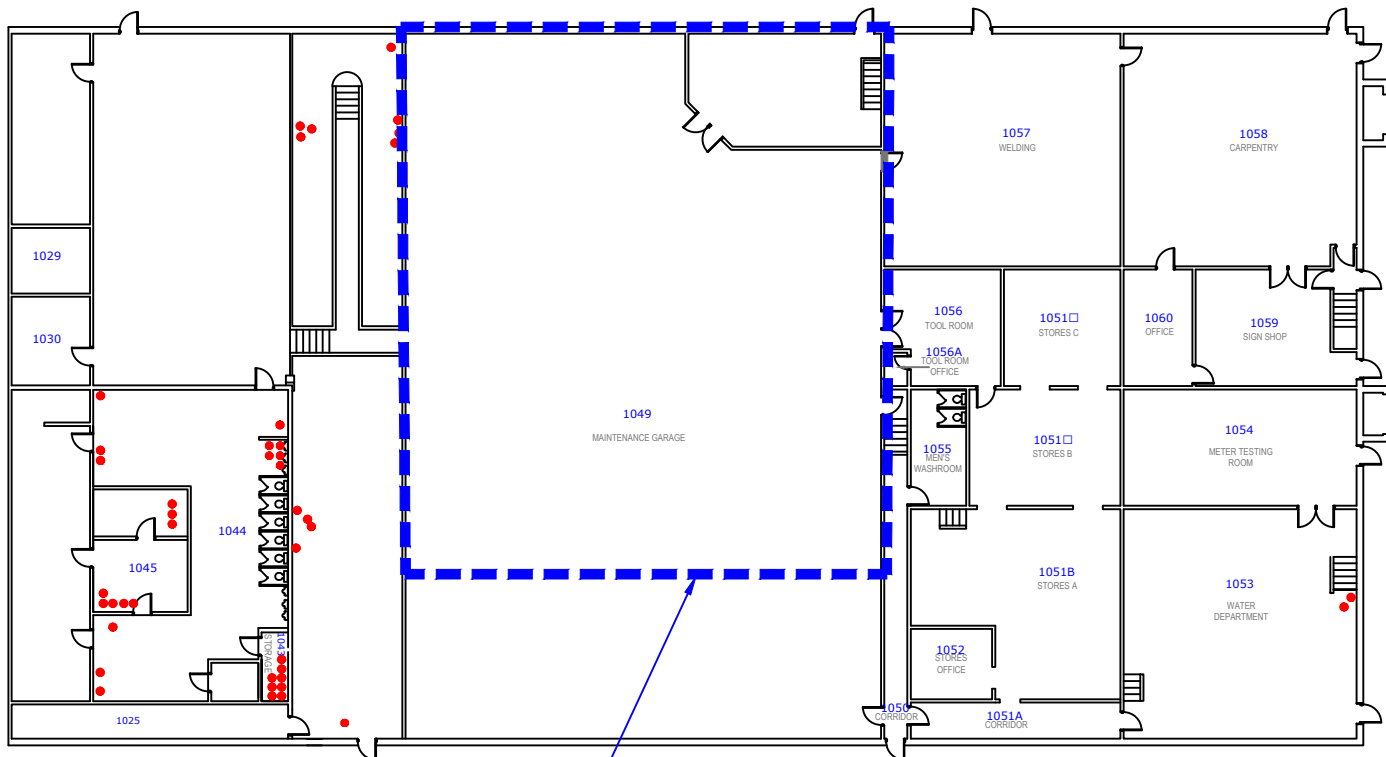
DRAWN BY: T. CORTES

CHECKED BY: S. HUSBAND

DATE: MARCH 25, 2021

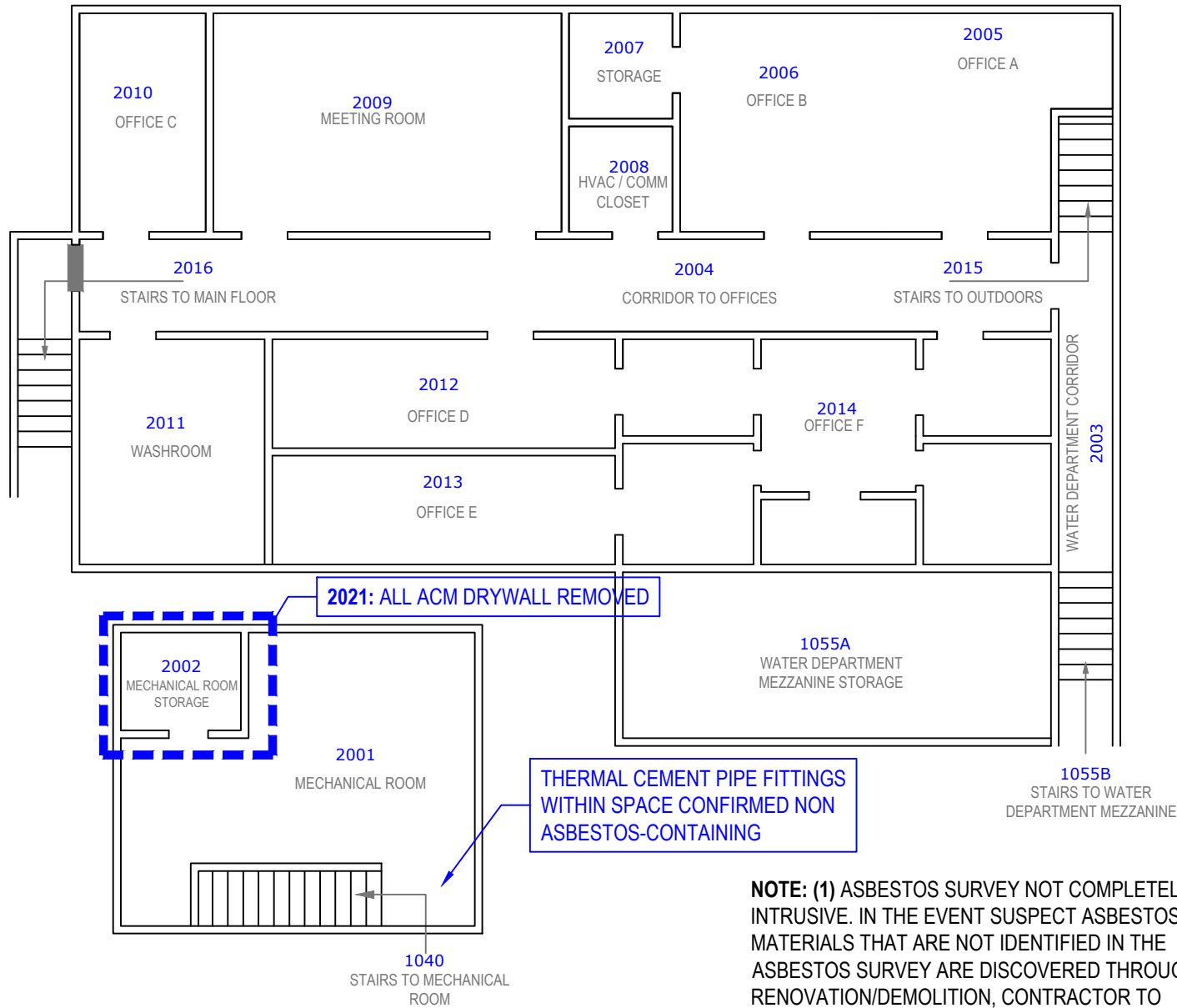
OESN JOB No: 00015.258

DWG #: CONF-MSCMB-2021-02



2021: THERMAL CEMENT PIPE
FITTINGS REMOVED FROM
GARAGE BAY AREA AT
CEILING HEIGHT

NOTE: (1) ASBESTOS SURVEY NOT COMPLETELY
INTRUSIVE. IN THE EVENT SUSPECT ASBESTOS
MATERIALS THAT ARE NOT IDENTIFIED IN THE
ASBESTOS SURVEY ARE DISCOVERED THROUGH
RENOVATION/DEMOLITION, CONTRACTOR TO
REQUEST VERIFICATION FROM THE OWNERS
CONSULTANT.



TITLE:
ASBESTOS LOCATION DRAWINGS
2021

CUSTOMER:
CITY OF NIAGARA FALLS

LOCATION:
MUNICIPAL SERVICE CENTER
MAIN BUILDING
3200 STANLEY AVENUE
NIAGARA FALLS, ONTARIO

2001 FUNCTIONAL SPACE
NUMBER ASSIGNED

ASBESTOS - CONTAINING
MATERIALS

DRYWALL WALLS

— INTERIOR CAULKING



REV. 0

SCALE: N. T. S.

DRAWN BY:

T. CORTES

CHECKED BY:

S. HUSBAND

DATE:

MARCH 25, 2021

OESH JOB No:

00015.258

DWG #:

CONF-MSCMB-2021-03

NOTE: (1) ASBESTOS SURVEY NOT COMPLETELY INTRUSIVE. IN THE EVENT SUSPECT ASBESTOS MATERIALS THAT ARE NOT IDENTIFIED IN THE ASBESTOS SURVEY ARE DISCOVERED THROUGH RENOVATION/DEMOLITION, CONTRACTOR TO REQUEST VERIFICATION FROM THE OWNERS CONSULTANT.